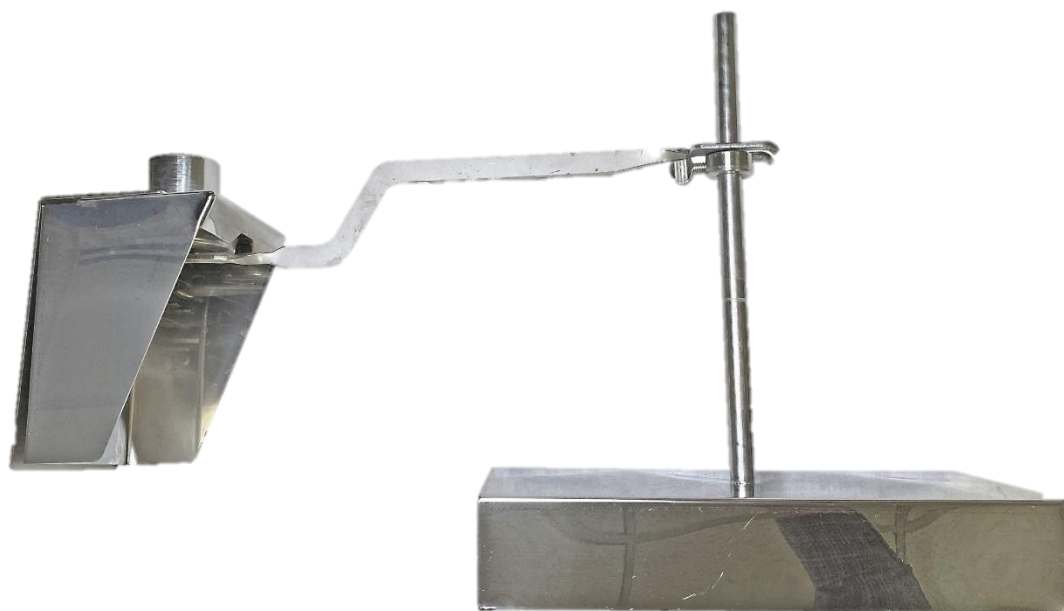


USER MANUAL

BOLT ON REGULATOR WITH FLOAT



LEADER[™]
WE HELP YOU GET MAPLE DONE

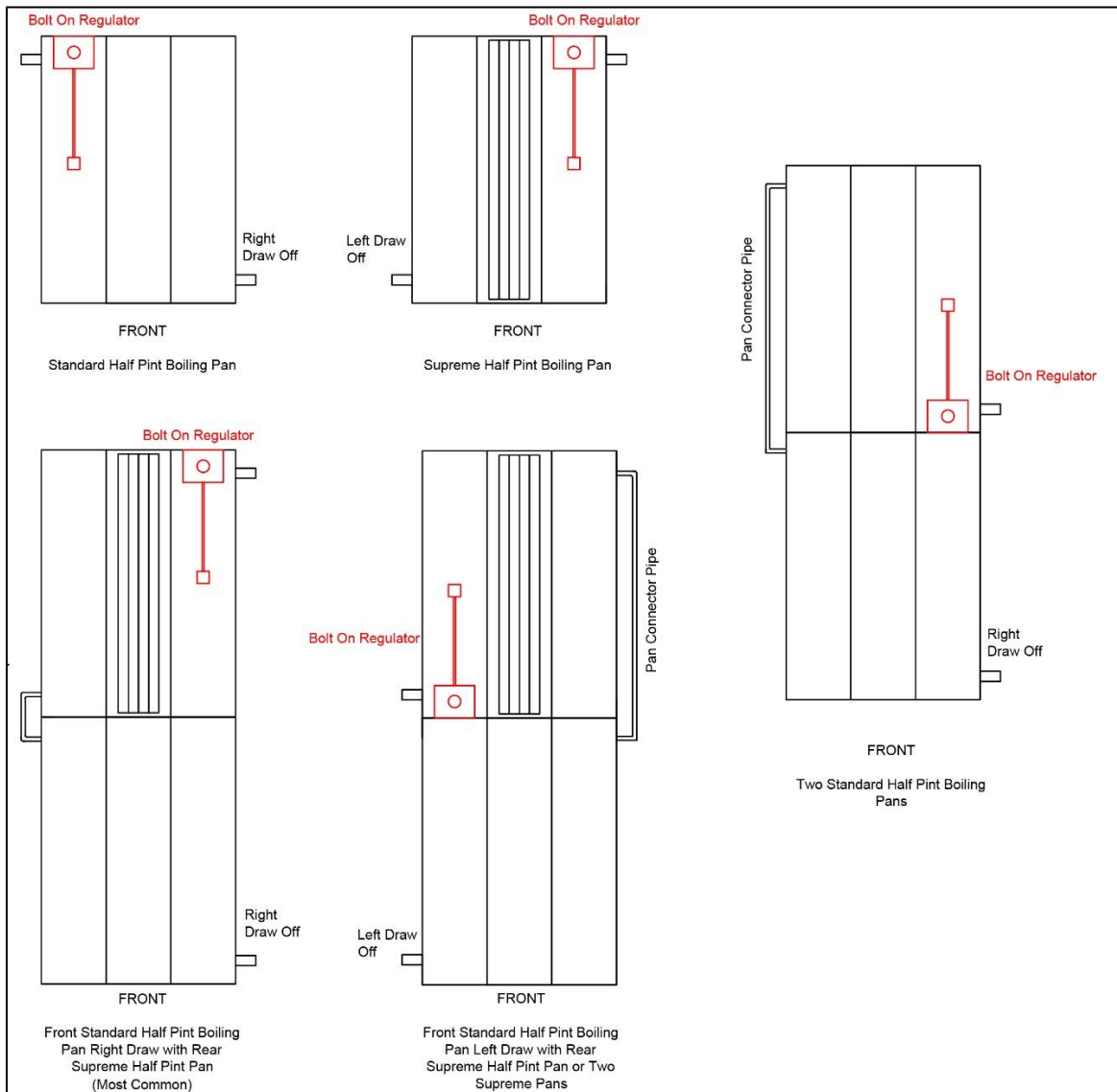
LEADER EVAPORATOR
49 Jonergin Drive
Swanton, VT 05488
(802) 868-5444
LeaderEvaporator.com

INTRODUCTION

The Bolt On Regulator kit is an option which can be installed on the half pint pan set. The kit, through the use of an adjustable float, provides a means for the operator to set and control the level of sap entering the boiling pan(s).

INSTALLATION

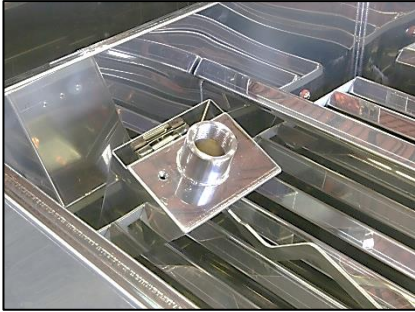
1. Location - The kit should always be installed so the sap enters the pan(s) at a point where it is at the furthest from the draw off point. The following drawing indicates possible installations on half pint setups.



2. The following steps show the installation of the Bolt On Regulator kit on a VERMONT pan. The same steps apply to installation of the kit on a half pint pan using the location as shown in the above drawing. NOTE: Remove the reservoir pan – it will not be used with the bolt on regulator kit.



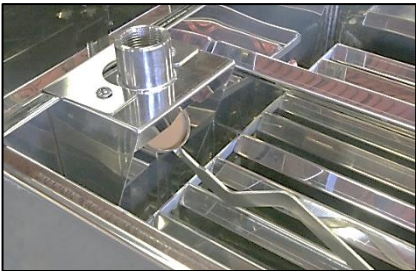
3. Disassemble the bolt on regulator.



4. Position the section with the float arm into the pan compartment as shown in the location drawing. It should be parallel to the side of the pan and approximately in the center of the compartment.



5. The L shaped part of the bolt on assembly should be placed on the outside of the pan. The top of the L shape has cutouts for the incoming sap connection and the screws. These cutouts should be aligned with the section of the bolt on regulator and the screws. The screws should be partially threaded in place.



6. Center the assembly in the compartment then tighten the screws.



7. Teflon tape the threads on both sides of a 1" stainless steel close nipple (not included). Thread the nipple into the top of the bolt on regulator assembly.



8. Thread a 1" stainless steel ball valve (not included) onto the stainless steel nipple. Tighten the ball valve into a position where it can work freely.



9. Teflon tape the threaded end of a 1" PVC adapter (not included) and thread it into the open end of the ball valve. Tighten.



10. Obtain a length of 1" braided hose (not included) of sufficient length to reach from the sap source and onto the 1" PVC adapter. Secure the hose on the PVC adapter with a 1" stainless steel band clamp (not included). Connect the other end of the hose to the sap source.



11. Install the float by lowering the float adjustment collar to the lowest level. Rotate the float under the fork at the end of the bolt on regulator kit arm. The thumbscrew for adjustment should be located at the outside of the fork opening.

Use

To set the level of the sap in the boiling pan, adjust the float. To adjust the float, loosen the thumb screw and move the collar up or down then retighten the thumb screw. Raising the collar will reduce the level of sap in the pan. Lowering the collar will raise the level of sap in the pan.

NOTE: The seal in the cup of the regulator arm is a replaceable item. If the sap flow is not controlled properly replace the seal (SKU 59065 also called regulator packing).